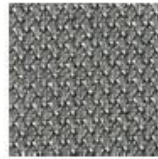


# Bata

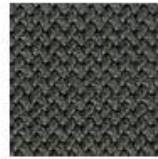
fabric



BA 600



BA 620



BA 650



BA 900



BA 560



BA 540



BA 250



BA 320



BA 360



BA 140



BA 420



BA 350



BA 310



BA 10



BA 20



BA S510



BA S550



BA S200



BA S590



BA S150



BA S530



BA S430



BA S610



BA S630



BA S670

PRODUCT TECHNICAL SPECIFICATIONS	
Basic Materials	100 % PES
Weight	340 ( $\pm$ 10) gr / m <sup>2</sup>
Abrasion	$\geq$ 50.000 rubs
Color Fastness to Rubbing	WET :4 gs
	DRY :4 gs
Light Fastness	LIGHT COLORS $\geq$ 5 bw /
	DARK COLORS $\geq$ 5 bw
Water Resistance	4

# Beatto

fabric



BE 1024



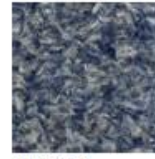
BE 1031



BE 1039



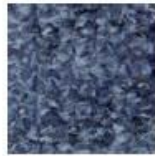
BE 1054



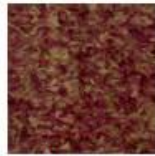
BE 1074



BE 1053



BE 1051



BE 1055



BE 1056



BE 1059



BE 1009



BE 1008



BE 1022



BE 1083



BE 1066



BE 1062



BE 1033



BE 1004

## PRODUCT TECHNICAL SPECIFICATIONS

Weight	278 gr / m <sup>2</sup>
Martindale	70.000
Chemical composition	100 Polyester

# Door

fabric



DR 1416



DR 6387



DR 6170



DR 3343



DR 1291



DR 1025



DR 1614



DR 7230



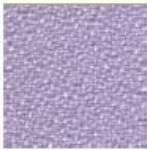
DR 2288



DR 6731



DR 1198



DR 3340



DR 7231



DR 6464



DR 1026

PRODUCT TECHNICAL SPECIFICATIONS	
Weight	290 gr / m <sup>2</sup>
Martindale	64.000
Chemical composition	100 Polyester

# Soft Touch

fabric



BR 01



BR 02



BR 04



BR 05



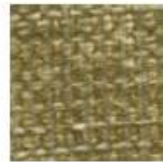
BR 06



BR 07



BR 08



BR 09



BR 10



BR 11



BR 12



BR 13



BR 15



BR 16



BR 18



BR 19



BR 20



BR 21

## PRODUCT TECHNICAL SPECIFICATIONS

Weight	354 gr / m <sup>2</sup>
Martindale	25.000
Chemical composition	100 Polyester

# Toga

fabric



VND 10



VND 30



VND 40



VND 50



VND 320



VND 340



VND 360



VND 250



VND 140



VND 110



VND 400



VND 410



VND 420



VND 530



VND 550



VND 560



VND 210



VND 590



VND 570



VND 900



VND 600



VND 650

PRODUCT TECHNICAL SPECIFICATIONS	
Basic Materials	100% PES
Weight	484 (+/-10) gr/m <sup>2</sup>
Tensile Strength	Across / EN-1460 Along Bay> 1188
Tear Strength	Across / EN-123 Along Bay> 107,1
Abrasion	100.000
Color Fastness Tu Rubbing	WET : 5 DRY : 5

# Verona

fabric



VR 1



VR 2



VR 3



VR 4



VR 7



VR 8



VR 9



VR 11



VR 12



VR 13



VR 14



VR 15



VR 17



VR 25



VR 20



VR 19



VR 21



VR 22



VR 23



VR 24

## PRODUCT TECHNICAL SPECIFICATIONS

Weight	310 gr / m <sup>2</sup>
Martindale	70.000
Chemical composition	100% Polyester

# Inter



IT 1



IT 2



IT 3



IT 5



IT 7



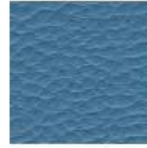
IT 8



IT 11



IT 12



IT 13



IT 14



IT 15



IT 16

COMPOSITION : VINYL  
BACKING : POLYESTER

TECHNICAL CHARACTERISTIC				
TEST TYPES	ASPECT	NORM	UNIT	STANDAHT TEST
WEIGHT		530±30	G/M	ISO 2286-2
THICKNESS		1,05±0,07	mm	ISO 2286-3
TEAR STRENGHT	ACROSS	>30	N	ISO 4674-1
	ALONG	>30	N	ISO 4674-1
TENSILE STRENGHT	ACROSS	>200	N	ISO 1421
	ALONG	>350	N	ISO 1421
ELONGATION AT BREAK	ACROSS	220±20%	%	ISO 1421
	ALONG	70±20%	%	ISO 1421
ADHESION		>40	N	ISO 2411
MARTINDALE/ABRASION		>20.000	RUB (12kPa)	ISO 5470-2
COLOR FASTNESS TO RUB-BING	DRY	≥5	GS	ISO 105X12
	WET	≥5	GS	ISO 105X12
LIGHT FASTNESS	LIGHT COLORS	≥4	BW	ISO 105B02
	DARK COLORS	≥5	BW	ISO 105B02

# Toskano



TK 1



TK 2



TK 3



TK 4



TK 5



TK 6



TK 7



TK 8



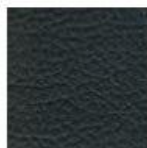
TK 9



TK 10



TK 11



TK 2307



TK 2308



TK 2309



TK 2314

COMPOSITION : VINYL / URETHANE TOP COAT  
BACKING : POLYESTER

TECHNICAL CHARACTERISTIC				
TEST TYPES	ASPECT	NORM	UNIT	STANDART TEST
WEIGHT		520±30	G/M	ISO 2286-2
THICKNESS		1,05±0,07	mm	ISO 2286-3
TEAR STRENGTH	ACROSS	>30	N	ISO 4674-1
	ALONG	>30	N	ISO 4674-1
TENSILE STRENGTH	ACROSS	>200	N	ISO 1421
	ALONG	>350	N	ISO 1421
ELONGATION AT BREAK	ACROSS	140±20%	%	ISO 1421
	ALONG	70±20%	%	ISO 1421
ADHESION		>40	N	ISO 2411
MAHTINDALE/ABRASION		>22.000	RUB (12kPa)	ISO 5470-2
COLOR FASTNESS TO RUBBING	DRY	≥5	GS	ISO 105X12
	WET	≥5	GS	ISO 105X12
LIGHT FASTNESS	LIGHT COLORS	≥4	BW	ISO 105B02
	DARK COLORS	≥5	BW	ISO 105B08

# Harsena



HS 1



HS 2



HS 3



HS 4



HS 5



HS 6



HS 8



HS 10



HS 12



HS 15



HS 18



HS 20



HS 23



HS 24



HS 26



HS 27



HS 28

COMPOSITION : VINYL  
BACKING : POLYESTER

TECHNICAL CHARACTERISTIC				
TEST TYPES	ASPECT	NORM	UNIT	STANDART TEST
WEIGHT		480±30	G/M	ISO 2286-2
THICKNESS		0,95±0,07	mm	ISO 2286-3
TEAR STRENGTH	ACROSS	>20	N	ISO 4674-1
	ALONG	>30	N	ISO 4674-1
TENSILE STRENGTH	ACROSS	>300	N	ISO 1421
	ALONG	>300	N	ISO 1421
ELONGATION AT BREAK	ACROSS	120±20%	%	ISO 1421
	ALONG	80±20%	%	ISO 1421
ADHESION		>40	N	ISO 2411
MARTINDALE/ABRASION		>22.000	FRUB (12kPa)	ISO 5470-2
COLOR FASTNESS TO RUBBING	DRY	>=3,5	GS	ISO 105X12
	WET	>=3	GS	ISO 105X12
LIGHT FASTNESS	LIGHT COLORS	>=3	BW	ISO 105B02
	DARK COLORS	>=4	BW	ISO 105B02

# Chester



CH 1



CH 2



CH 3



CH 4



CH 5



CH 7

## PRODUCT TECHNICAL SPECIFICATIONS

Weight	560 gr / m <sup>2</sup> (+/- 30)
Product Width	140 cm (+/-2)w
Thickness	1.00 +/- 0.10mm
Chemical composition	%2.0 PU, %80 PVC, %18 POLYESTER

# Martin



MR 1



MR 2



MR 3



MR 4



MR 5



MR 6



MR 7



MR 8



MR 9

COMPOSITION : VINYL  
BACKING : POLYESTER

## TECHNICAL CHARACTERISTIC

TEST TYPES	ASPECT	NORM	UNIT	STANDART TEST
WEIGHT		500+10	G/M	ISO 2286-2
THICKNESS		0,90+0,05	mm	ISO 2286-3
TEAR STRENGHT	ACROSS	>30	N	ISO 4674-1
	ALONG	>30	N	ISO 4674-1
TENSILE STRENGHT	ACROSS	>200	N	ISO 1421
	ALONG	>350	N	ISO 1421
ELONGATION AT BREAK	ACROSS	140+20%	%	ISO 1421
	ALONG	70+20%	%	ISO 1421
ADHESION		>40	N	ISO 2411
MARTINDALE/ABRASION		>30.000	HUB (12kPa)	ISO 5470-2
COLOR FASTNESS TO RUB-BING	DRY	>=5	GS	ISO 105X12
	WET	>=5	GS	ISO 105X12
LIGHT FASTNESS	LIGHT COLORS	>=4	BW	ISO 105B02
	DARK COLORS	>=5	BW	ISO 105B02